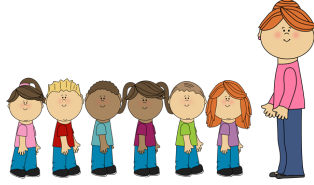


## IN PERSON INSTRUCTION AT OWEN COUNTY ELEMENTARY



- Students will go to school in person 4 days a week and be required to do remote learning the 5th day.
- Students will need masks. When students move, they mask. If and when social distancing is possible, masks are not required.
- Students will need to bring their chromebook, charger, mesh backpack and sleeve each day to school; it must be fully charged each night; they will utilize it daily in class.
- Students will not share supplies. They will need their own supplies
- Families need to join Class Dojo
- We are asking that no visitors be in the building for health and safety reasons.

### Arrival/Breakfast

- Students riding the bus will have their temperature checked & documented prior to getting on the bus.
- Masks are required on the bus.
- Car riders will have their temperature checked prior to getting out of the car.
- All students and staff entering the building must be masked
- If students want breakfast, they will grab it and go straight to their classroom
- ONCE socially distanced in their assigned seat, students may remove their masks to eat.
- Before students get up to throw things away, they must place their mask back on their face.
- Students who arrive late will need to be signed in at the front office by an adult. Anyone entering the front door will need to be wearing a mask. Adults will be asked to stay in the foyer and sign in the student.

### Instructional Time

- If students and teachers move, they mask.
- If pulled for small group instruction, in or outside of the classroom, masks will be required
- Whole group floor instruction will not be allowed- students will sit at their assigned seats.
- Students will move to Activity classrooms. Once in the Activity classroom, students can remove their masks if social distancing is possible. Activity classrooms will be sanitized between classes.
- Masks are not required at lunch (only walking to and from lunch and walking through the lunch line); but students will be spread out to social distance safely while eating unmasked. Students will eat in the cafeteria or other designated space. The spaces will be sanitized between classes.
- Masks are required while moving in the hallways at all times.
- If the weather permits, students may go outside. The number of classes on the playground will be limited. **Masks will be required at all times.** (The playground will be sanitized throughout the day between uses.)

#### **Kindergarten/First Grade:**

- Students will be with the same homeroom teacher for most of the day. If we are able to social distance, masks will not be required. Students will move to other classrooms for Activity Class as well as lunch.

#### **Second/Third/Fourth Grades:**

- Students will have different teachers for different subjects- students will not switch classrooms. They will stay in their homeroom class and teachers will switch. Students and teachers will wear masks if social distancing is not possible.

### Dismissal

- We will still have loop, first and second buses. Masks will be required while moving, waiting to load cars, and on the bus.
- All car riders will be dismissed from the loop.
- If your child needs to be checked out early, please ring the bell. Adults will be asked to stay in the foyer to sign out your child. We are asking that no visitors be in the building for health and safety reasons.